

Infection Control Presentation

Face Masks, Hand Hygiene/Sanitizing and Proper Use of PPE

Presented by: The HMS Covid Response Team

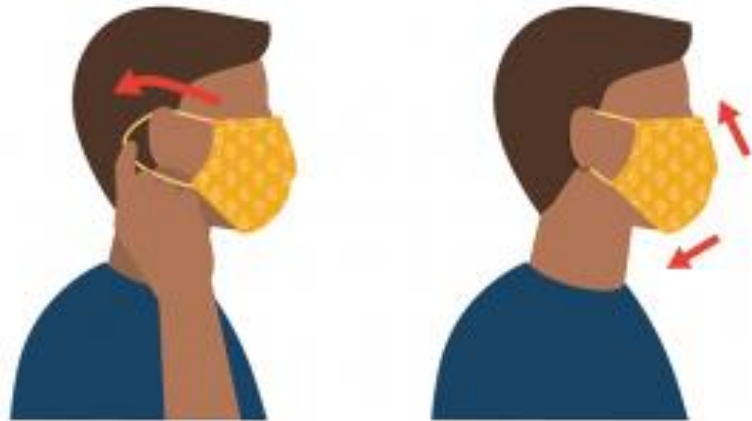
Topics of discussion

- ▶ Today we are going to cover three very important infection control topics
- ▶ 1. Face masks
 - ▶ Proper placement and removal
 - ▶ The “Do and Don'ts” of face masks
- ▶ 2. Hand hygiene and Sanitizing
- ▶ 3. How to properly put on and take off PPE

Objectives

- ▶ To ensure all staff are properly educated on infection control guidelines for proper use of ALL PPE equipment (ex. masks, shields/goggles, gloves and gowns/smocks)
- ▶ To instruct and educate all staff on the proper face mask to wear and the “Do’s and Don’ts” of face masks.
- ▶ To instruct and educate all staff on proper hand hygiene and sanitizing

Topic 1: Face Masks



- ▶ In this slide you will find an image on how to properly wear your mask. Also, the steps on how to wear your Mask correctly.
- ▶ PLEASE REMEMBER - the mouth covering of a face mask is the “Danger Zone” - DO NOT TOUCH. This is not always possible so IF YOU MUST TOUCH YOUR MASK always remember to WASH YOUR HANDS afterwards.

Wear your Mask Correctly

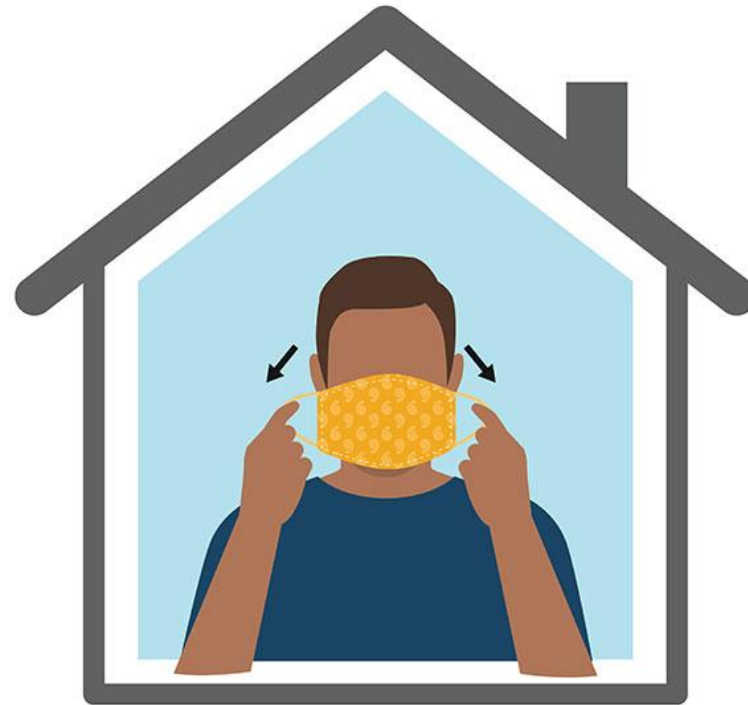
- ▶ Wash your hands or use hand sanitizer before putting on your mask.
- ▶ Put the mask over your nose and mouth and secure it under your chin.
- ▶ Fit the mask snugly against the sides of your face, slipping the loops over your ears or tying the strings behind your head.
- ▶ If you continually must adjust your mask, it doesn't fit properly, and you might need to find a different mask type or brand.
- ▶ Make sure you can breathe easily.

Topic 1: Face masks-The removal of the face Mask.

- ▶ Below you will find the correct way to remove your mask:

Take Off Your Mask Carefully

- ▶ 1. Untie the strings behind your head or stretch the ear loops
- ▶ 2. Handle only by the ear loops or ties
- ▶ 3. Fold outside corners together
- ▶ 4. Place mask in the washing machine (learn more about [how to wash masks](#))
- ▶ 5. Be careful not to touch your eyes, nose, and mouth when removing and [wash your hands](#) immediately after removing.



Topic 1: Face Masks; The Do's and Don'ts

Do's

- Wear a mask over your nose and mouth to help prevent getting and spreading COVID-19.
- Wear a mask in public settings when around people who don't live in your household, especially when indoors and when it may be difficult for you to stay six feet apart from people who don't live with you.
- Wear a mask correctly for maximum protection.
- Wear your mask under your scarf, ski mask, or balaclava in cold weather
- Keep a spare mask to replace one that becomes wet from moisture in your breath, snow, or rain.
- Store wet reusable masks in a plastic bag until they can be [washed](#).



Don'ts

- Put the mask around your neck or up on your forehead.
- Touch the mask, and, if you do, [wash your hands](#) or use hand sanitizer.



Topic 2: Hand Hygiene and Sanitizing

- ▶ Hand hygiene and sanitizing is the MOST important step in stopping the spread of “Germs”
- ▶ Here you will see a short video on the proper way to wash and Sanitize your hands.
- ▶ <https://youtu.be/1YdfLYhqu4Y>
- ▶ Just a reminder ALL staff will be signed off by a CRT member for proper handwashing competency
- ▶ Always remember to **WASH WASH WASH!!!!**



Topic 2: Hand Hygiene Continued..

- ▶ Here is the Step-by-step Hand washing/Sanitizing outline:

HMS SCHOOL

Competency for Hand Hygiene

HAND WASHING USING SOAP AND WATER:

1. Participant removed watch and other jewelry
2. Participant turned water on to a comfortably warm temperature then wet hands
3. Participant dispensed a dime sized volume of soap into palm
4. Participant lathered and gently rubbed all inside crevices, palms and backs of hands for no less that 15seconds
5. Participant rinsed hands thoroughly
6. Participant left water running while drying hands
7. Participant turned off faucet with paper towel

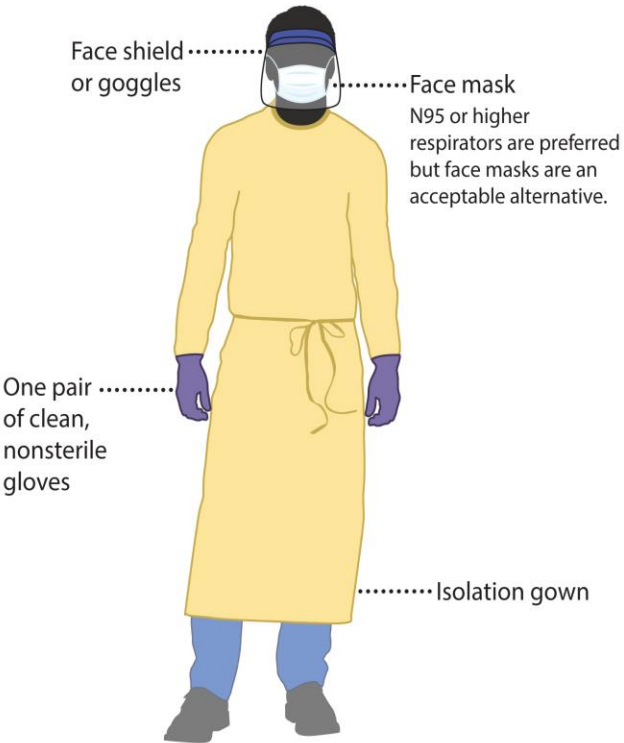
HAND WASHING USING HAND SANITIZER:

1. Participant placed a dime sized volume of sanitizer into palm of one hand
2. Participant rubbed hands together covering palms, backs of hands and all crevices until hands are dry.

Topic 3: Proper wear of PPE

- ▶ What is PPE?
- ▶ Answer: Personal Protective Equipment
 - ▶ Face Mask, Shields/Goggles, Gloves and Gowns/Smock
- ▶ In this slide you will find two videos from the CDC website:
 - ▶ First Video: How to apply all PPE <https://youtu.be/H4jQUBAlBrI>
 - ▶ Second Video: How to properly take off your PPE <https://youtu.be/PQx0c13DxvQ>
- ▶ FYI; The video does reference N95 Masks with the PPE use; This DOES NOT apply to our use at HMS. You will notice they also reference Face Masks.
- ▶ Also, we have some staff using washable or reusable gowns... That's OK you still want to apply the same way. The only difference will be the disposal of the gown.

Acceptable Alternative PPE – Use Face mask



[cdc.gov/COVID19](https://www.cdc.gov/COVID19)

Topic 3: PPE Continued..

- ▶ Hope you enjoyed the videos and found them helpful.
- ▶ Below we have attached the outline from the videos with images.
- ▶ https://www.cdc.gov/coronavirus/2019-ncov/downloads/A_FS_HCP_COVID19_PPE.pdf
- ▶ We are working every day to keep our students, staff and families healthy and safe.
- ▶ Please call or email our Covid Resource Officer, Patty Mars, with any questions or concerns.

Key Reminders:

- ▶ 1. Always wear your properly
- ▶ 2. Keep your hands away from your face or face mask
- ▶ 3. **WASH, WASH, WASH** your hands
- ▶ 4. Wear your PPE correctly every time
- ▶ 5. Be Safe, Think Smart!!

QUESTIONS?????

- ▶ Does anyone have any questions?
- ▶ If you do have any questions please reach out to a member of the CRT (Covid Response Team) Patty Mars, Denise Murrison, Melissa Owens or Stephanie Santiago-Villanueva. We are here to help in any way we can!!
- ▶ Thank you for watching our presentation!!!