

## KYDEX® Thermoplastics Surface Textures for Holsters & Sheaths

### INTRODUCTION

Textures are embossed into KYDEX® Thermoplastic sheet during the extrusion process. There are three common textures used to produce holsters and sheaths. The following is a summary of each.

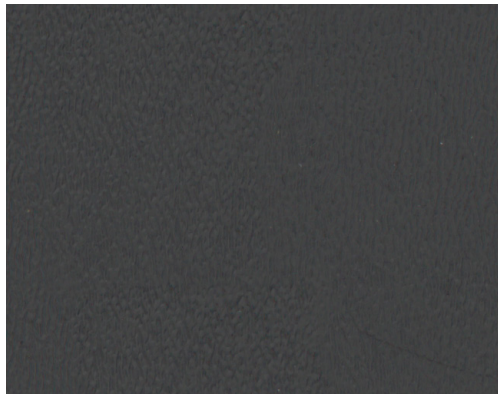
### STANDARD TEXTURES

#### Haircell (P-1)



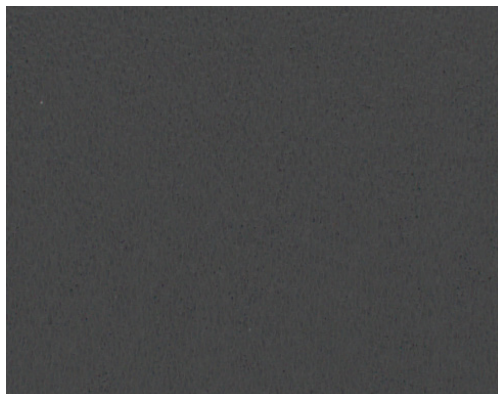
- Best abrasion resistance
- Directional texture
- Contains fat lines that show leatherette effect
- Tooling lines may be visible from texture engraving

#### Level Haircell (P-C)



- Best abrasion resistance
- Directional texture
- Same texture as Haircell (P1), without the fat lines
- Tooling lines may be visible from texture engraving

#### Velour Matte (P-3)



- Excellent abrasion resistance
- Non-directional texture
- Uniform appearance, no tooling lines
- Shallow texture, easy to clean



**Customer Collaboration**  
6685 Low St, Bloomsburg, PA 17815 USA  
Phone: 800.325.3133, +1.570.389.5810  
Email: [info@kydex.com](mailto:info@kydex.com)

**appLab™**  
Phone: 800.682.8758  
Email: [applab@kydex.com](mailto:applab@kydex.com)

[kydex.com](http://kydex.com)

## KYDEX® Thermoplastics Surface Textures for Holsters & Sheaths

### TEXTURE CHARACTERISTICS

#### Cleaning

Texture plays a major role in the ease of cleaning a holster or sheath. Shallow texture can easily be cleaned with a soft cloth, while a heavier or deeper texture may require the use of a soft bristle brush to remove material from texture valleys.



Dirty P3 Holster



Cloth Cleaned P3 Holster



Dirty P1/PC Holster



Cloth Cleaned P1/PC Holster



Brush Cleaned P1/PC Holster

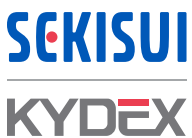
#### Tooling Marks – Texture Details

##### Tooling Lines

Texture rolls are produced through an engraving process that uses a machining tool to cut the texture into the face of a cylinder roll. This tool has a specific width, which machines multiple sections across the width of the cylinder roll. Points on the engraved cylinder where the tooling sections meet have a faint transition line. These lines leave a faint impression in the sheet surface and are more noticeable in darker colors.

##### Fat Lines

Fat lines are a texture feature to simulate a leatherette effect in Haircell (P-1). This effect creates diagonal impressions in the material surface. Some customers may not desire this effect and should choose a texture like, Level Haircell (P-C) to provide the same texture without the fat lines.



#### Customer Collaboration

6685 Low St, Bloomsburg, PA 17815 USA  
Phone: 800.325.3133, +1.570.389.5810  
Email: [info@kydex.com](mailto:info@kydex.com)

#### appLab™

Phone: 800.682.8758  
Email: [applab@kydex.com](mailto:applab@kydex.com)

[kydex.com](http://kydex.com)

