

140 | LAFAYETTE | STREET

AKA 12 HOWARD • NW CORNER OF HOWARD STREET



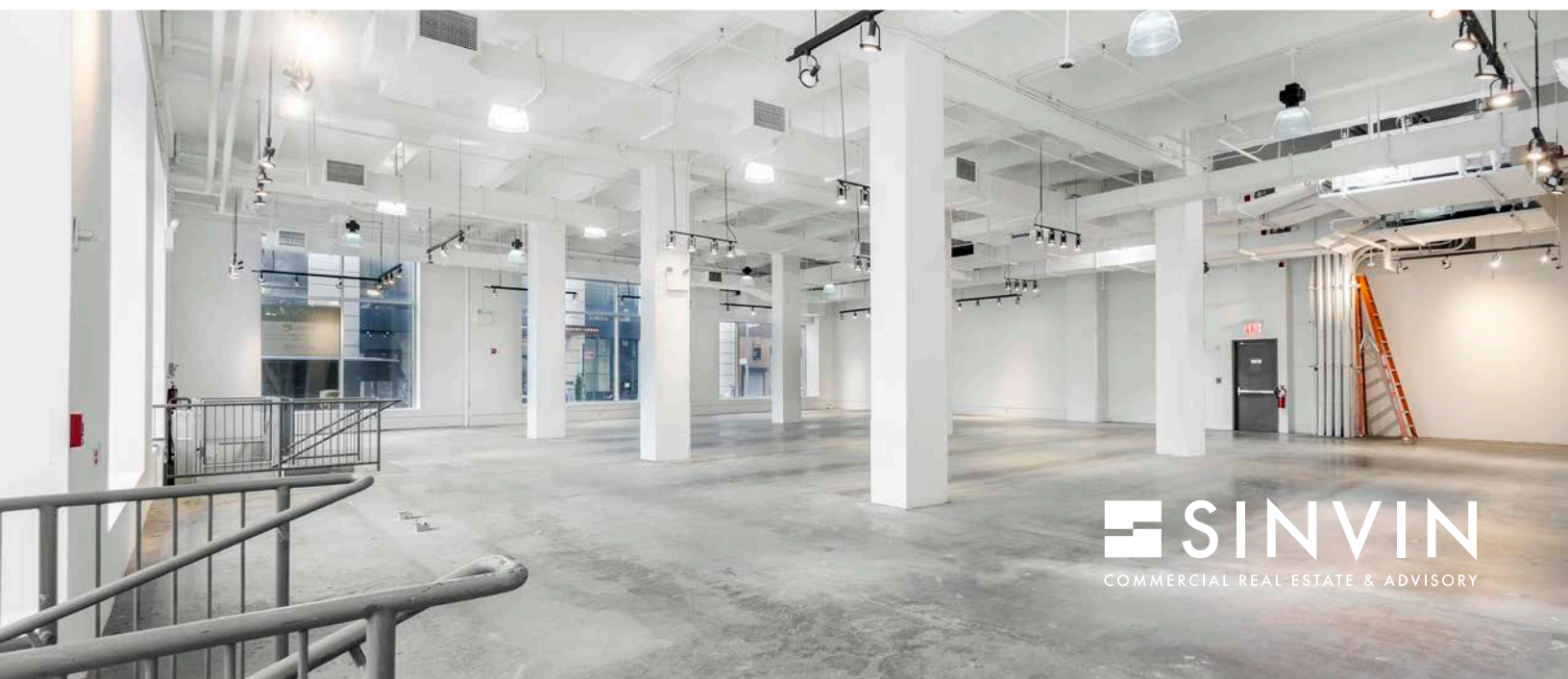
DETAILS:

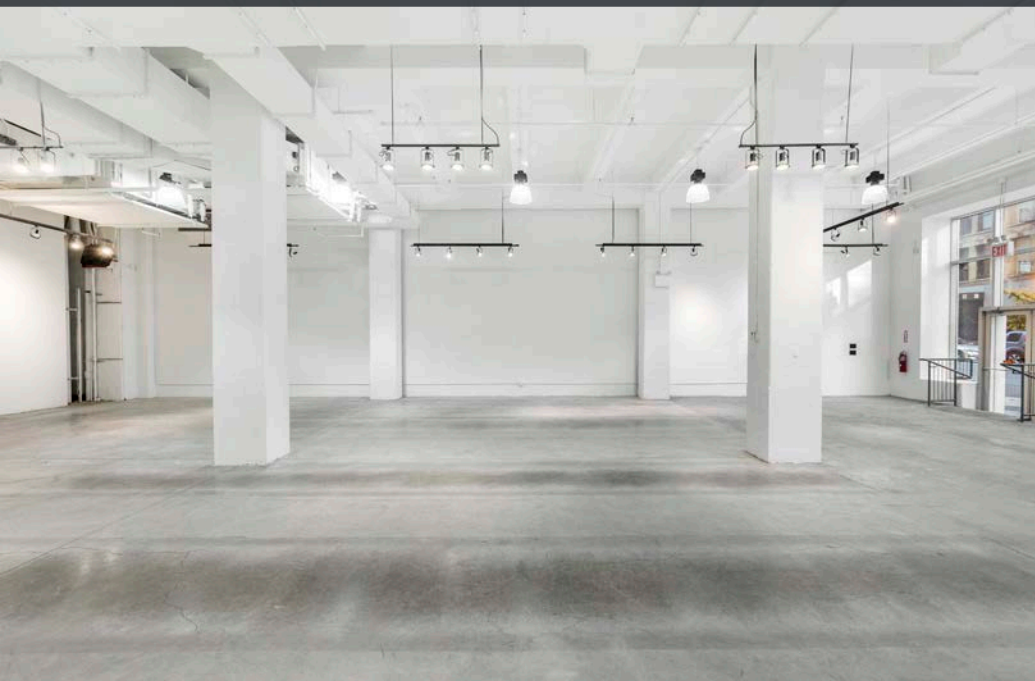
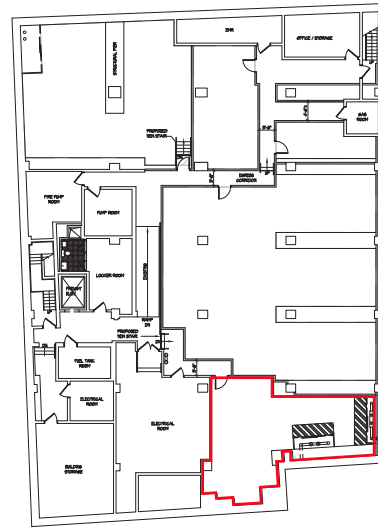
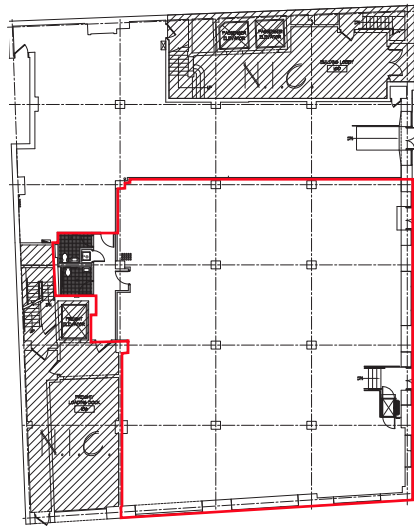
Ground Level:	5,346 Square Feet (Divisible)
Lower Level:	700 Square Feet
Wraparound Frontage:	135' (70' on Lafayette, 65' on Howard)
Ceiling Heights:	20' (Ground), 14' (Lower)
Term	Negotiable
Possession:	January 15, 2023
Asking Rent:	Please Inquire



NOTES:

- Flagship corner store with 135' of wraparound frontage
- Immense interior volume
- All uses considered
- Opposite the 11 Howard Hotel and steps from Maison Margiela, Rick Owens, BDDW, Reformation, Parachute Home, Peter Freeman Gallery, Le Coucou, and the NOMO SOHO Hotel
- Possible to divide into two units





<p>Acne</p> <p>GREENE STREET</p> <ul style="list-style-type: none"> • Acne • ANTIQUE GARAGE • AMERICAN GIANT • COURTYARDS 	<p>MERCER STRE</p> <ul style="list-style-type: none"> • GANNI 	<p>BROADWAY</p> <ul style="list-style-type: none"> • PARADISE • THE GARDEN 	<p>CROSBY STRE</p> <ul style="list-style-type: none"> • SATURDAYS 	<p>LAFAYETTE STR</p> <ul style="list-style-type: none"> • GASOLINE ALLEY COFFEE • THE BUTLER
<p>Boffi</p> <p>GRAND STREET</p> <ul style="list-style-type: none"> • BAGGU • ESVU • RONALD FELDMAN FINE ARTS • USM • NIKE LAB • FOSCARINI • BLUE IN GREEN • R+A • Roll & Hill • CANAL LIGHTING & PARTS 	<p>GRAND STREET</p> <ul style="list-style-type: none"> • KENZO • orior • CB2 • NECESSARY CLOTHING • IFILES • agris & • THE SHOPS OF SOHO • Steve Madden • GUILD 	<p>GRAND STREET</p> <ul style="list-style-type: none"> • DUANE readie • MUJI • CB2 • BLICK (SOHO) • LA ROPA LIFE • THE SHOPS OF SOHO 	<p>HOWARD STREET</p> <ul style="list-style-type: none"> • WILA & YOKO • RED DIGITAL CINEMA • Le Botaniste • PARAFUTE • LACALE • DIVE BY THE SWORD • PEARL RIVER MARKET • VALLEY NATIONAL • RALLY • STARBUCKS • NECESSARY CLOTHING • Foot Locker • Champion • R.13 • Recess 	<p>CROSBY STREET</p> <ul style="list-style-type: none"> • FLEQUA 1883 • TWO SPOT • GRANITE • SOHO TBA • ESPERANZA • SOCKS N'KIA • GARIBOLDI • CALIFORNIA OPTICAL • BABY GRAND • THE SHIP • NOMO SOHO • BDDW • FIVE POINTS ACADEMY • MMO • SMILE • M. CROW • 140
<p>Bank of America</p>	<p>BROADWAY</p> <ul style="list-style-type: none"> • PIQ Soho • REFORMATION • 11 HOWARD HOTEL • LOVE HATE SOCIAL CLUB 	<p>HOWARD STREET</p> <ul style="list-style-type: none"> • GOLF WINGS • SARAO 	<p>CROSBY STREET</p> <ul style="list-style-type: none"> • REFORMATION • 11 HOWARD HOTEL 	<p>LAFAYETTE STR</p> <ul style="list-style-type: none"> • LOVE HATE SOCIAL CLUB

CONTACT:

Christopher Owles
212.604.9002
chris@sinvin.com

Sarah Shannon
646.673.8780
sarah@sinvin.com

