

BETWEEN PRINCE & SPRING STREETS

# 105 WOOSTER

SOHO STORE WITH EXPANSIVE WOOSTER STREET FRONTAGE

Ground Level: **4,900 Square Feet** | Lower Level: **3,850 Square Feet** | Frontage: **30'**  
Ceilings: **14' (Ground), 9' (Lower)** | Possession: **Immediate** | Asking Rent: **Please Inquire**





NOTES:

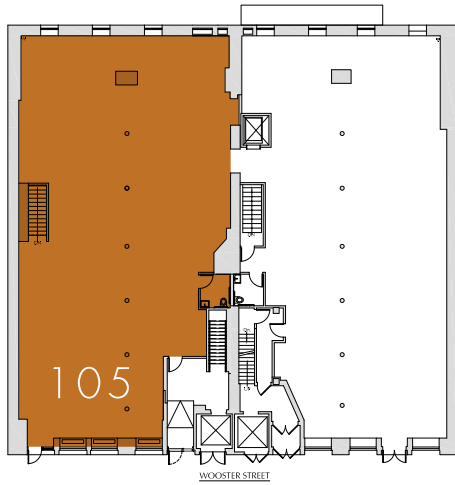
- Pristine store - Both levels are legal for retail
- Available for long-term and pop-ups
- Prestigious luxury and outerwear co-tenancies

NEIGHBORS INCLUDE:

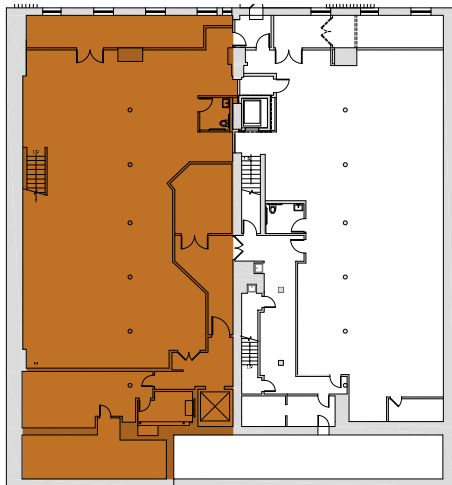
Woolrich • Ted Baker • Canada Goose • Marimekko • Victorinox • Ray-Ban • Mulberry • Tiffany • Chanel • Marc Jacobs



## GROUND LEVEL



## LOWER LEVEL



- EVER/BODY
- HALSTEAD PROPERTY
- UNAGI
- ROGER DUBUIS
- PROENZA SCHOUER
- WARBY PARKER
- FARM RIO
- RALPH LAUREN
- MARC JACOBS
- FAHERTY
- OUTERKNOWN
- LOUIS MEISEL
- CORDA COUTURE

WOOSTER STREET

WEST BROADWAY

## PRINCE STREET

- FRANKLIN BOWLES GALLERY
- SCAVOLINI
- SEE
- LIK GALLERY
- NANAMICA
- Barbour
- WOOLRICH
- TED BAKER
- CANADA GOOSE
- CHASE CONTEMPORARY
- MARNI
- MANUELA
- 105 WOOSTER

WOOSTER STREET

WEST BROADWAY

## SPRING STREET

- MORGENTHAU FREDERICKS
- NEUHAUS
- JAY KOS
- CROCKETT & JONES
- ReVe Williams
- RAYMOND WARE
- FERRARY
- GROUND SUPPORT
- EILEEN FISHER
- JOYBIRD
- SHADE STORE

WOOSTER STREET

WEST BROADWAY

## PRINCE STREET

- PILATS
- PLAS
- NARS
- [No. 100]
- LA PERLA
- JOHN HARDY
- SLOWEAR
- DIOR HOMME
- Dior
- BOTTEGA VENETA
- FENDI
- TIFFANY & Co.
- TIFANY & Co.
- HERNO
- Chloé
- ERIC EMANUEL
- CAMPER
- DAVID YURMAN
- AG
- VERSACE
- tibi
- Ray-Ban
- ARIAS
- FANA
- cinq/sept
- MULBERRY
- CHANEL
- VALENTINO
- BURBERRY
- COS
- ETRO

GREENE STREET

GREENE STREET

GREENE STREET

## SPRING STREET

- MACKAGE
- EMPORIO ARMANI
- LONGCHAMP
- ÂME
- MOLTON BROWN
- KENDRA SCOTT
- Paul Smith
- ANINE BING
- LOEWE
- TheRealReal
- AMI

Christopher Owles  
212.604.9002  
chris@sinvin.com

Sarah Shannon  
646.673.8780  
sarah@sinvin.com

