

# 68 RICHARDSON STREET

BROOKLYN | BETWEEN LORIMER & LEONARD STREETS

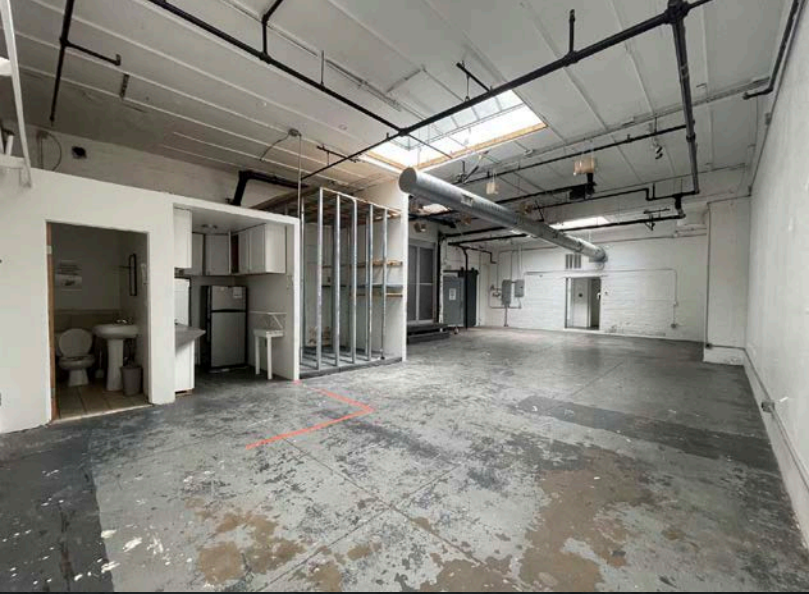


## CREATIVE COMMERCIAL SPACE

68 Richardson is a 2,000 sf quiet commercial space nestled behind upscale apartments located between Williamsburg and Greenpoint. The space has two private offices with a large area for storage.

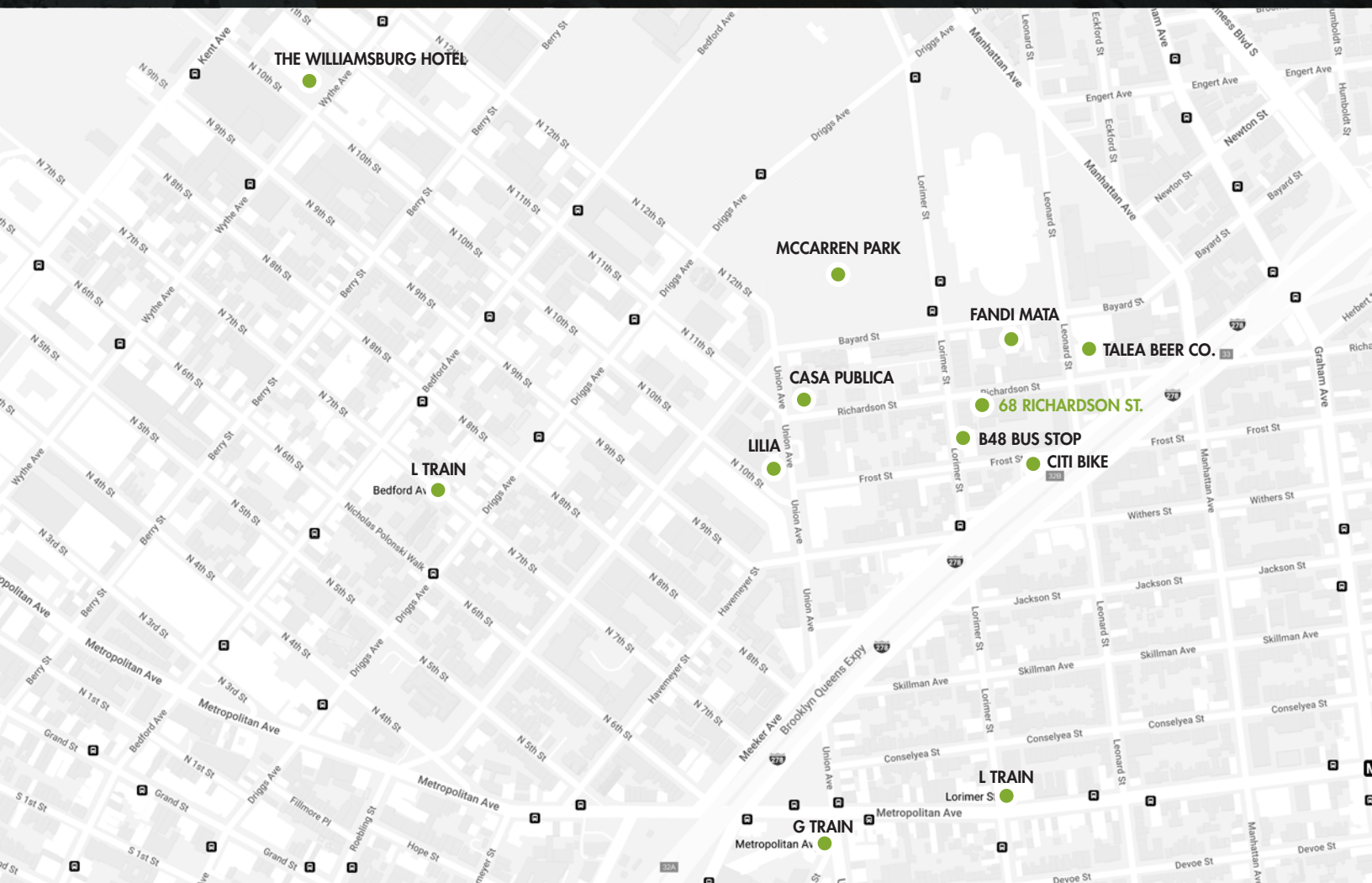
## DETAILS:

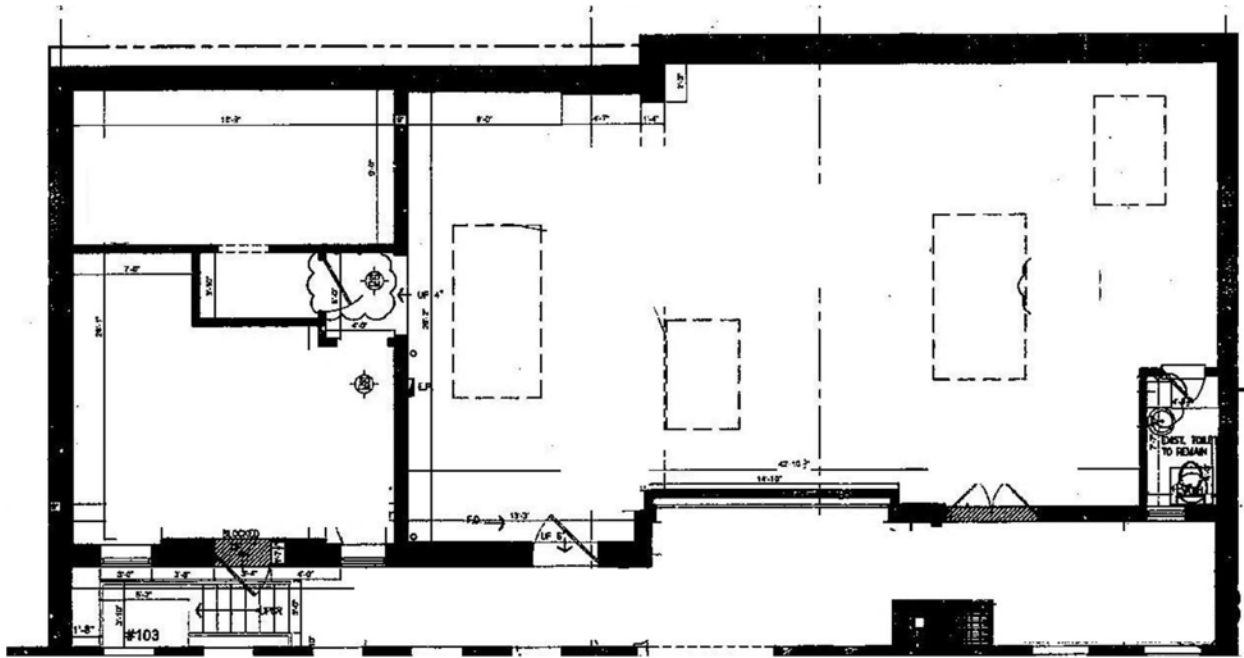
Ground Level.....2,000 Square Feet  
Ceiling Height.....13' 6"  
Term.....Negotiable  
Possession.....Immediate  
Asking Rent.....Please Inquire



## NOTES:

- 2,000 sf on the ground floor
- 6 skylights and high ceilings
- Blade signage is available
- Bathroom and wet pantry
- Garage-style doors
- Close to McCarren Park and public transportation
- Near great restaurants
- CO is for storage and warehouse





## PLEASE CONTACT:

James Costello  
646.673.8752  
james@sinvin.com

Eric Friedlander  
646.201.5145  
eric@sinvin.com

Owen Toland  
212.604.9825  
owen@sinvin.com

 **SINVIN**  
COMMERCIAL REAL ESTATE & ADVISORY

