

6,108 SF of Prime Tribeca Retail For Sale

112-114

HUDSON ST.

BETWEEN FRANKLIN & NORTH
MOORE STREET.



An investment opportunity to own two adjacent retail condos in the heart of Tribeca's historic district, located between Franklin and North Moore Street.



112 Hudson St.

CAFE ATELIER
FLOWER • COFFEE

GROUND LEVEL - 1,234 SF

LOWER LEVEL - 832 SF



NET OPERATING INCOME: \$344,261

LEASE EXPIRATION: 02/28/2030



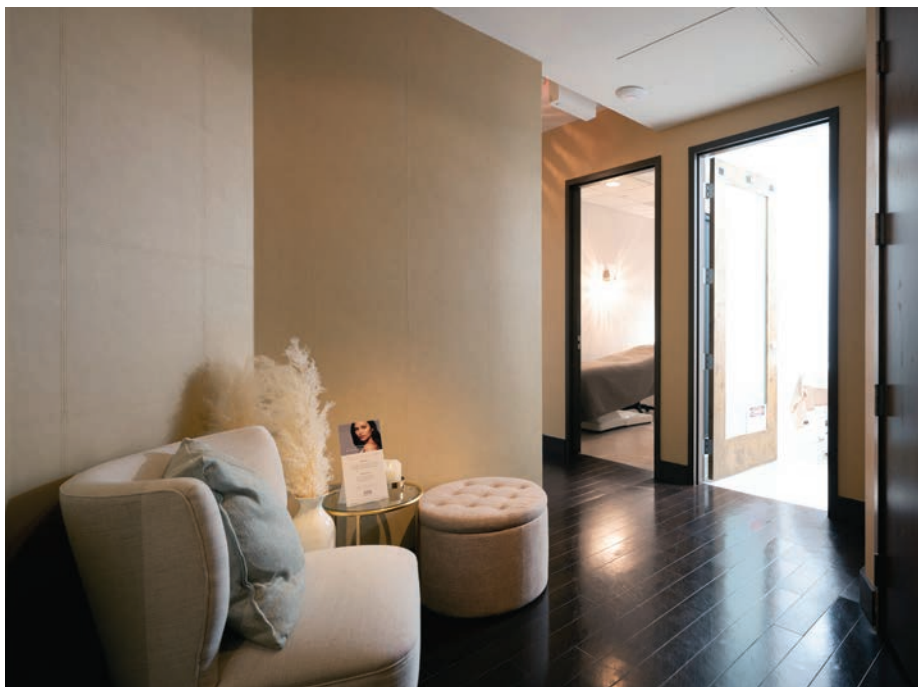
114 Hudson St.

GROUND LEVEL - 2,273 SF

LOWER LEVEL - 1,769 SF



LEASE EXPIRATION: 06/30/2026 WITH
2 - 5 YEAR OPTIONS STARTING ON
07/1/2026 AND 07/1/2031.



NEIGHBORS

- Issey Miyake
- Mr. Chow
- Thom Browne
- Bubby's
- Greenwich Hotel

THE GREENWICH HOTEL

ISSEY MIYAKE

LOCANDA VERDE

Tribeca Grill


kataoka
jewelry and objets d'art

beefbar
(soon)

NORTH MOORE STREET

BUBBY'S

ESPASSO

TOKIYAMA
LOTUS SALON

WALKER'S

CAFE ATELIER

DOWNTOWN
PEDIATRICS

PLAYING
MANTIS

OSTERIA
CARLINI

112 - 114
Hudson Street

GURHAN

URBANARCHAEOLOGY


Douglas
Elliman
REAL ESTATE

BENVENUTO CAFE

SHINOLA

AMERICAN CUT
IL MULINO

STONE
& STRAND

THE SMILE

TAMARIND

THIERRY W. DESPONT
GALLERY

CHANSON

PABLO'S
BIRTHDAY

FRANKLIN STREET

THOM BROWNE
NEW YORK


PATRON OF THE NEW

NOTES

- Both properties are protect tax class: 2C, helping to reduce overall operating expenses.
- Tenants are responsible for a significant portion of the property taxes and common charges.
- Located close to subways 1, A, C, E.
- Please contact us for additional information regarding the rent roll.

PLEASE CONTACT

Jane McVerry
(212) 604 - 9005
jane@sinvin.com

 **SINVIN**
COMMERCIAL REAL ESTATE & ADVISORY

CAFE ATELIER
FLOWER - COFFEE

OPEN HOURS