

114

BETWEEN PRINCE & SPRING STREETS
WOOSTER STREET

Ground Level: **2,260 Sq Ft** | Lower Level: **700 Sq Ft** | Frontage: **25'** | Possession: **Spring 2023**

Asking Rent: **Please Inquire**





NEIGHBORS:

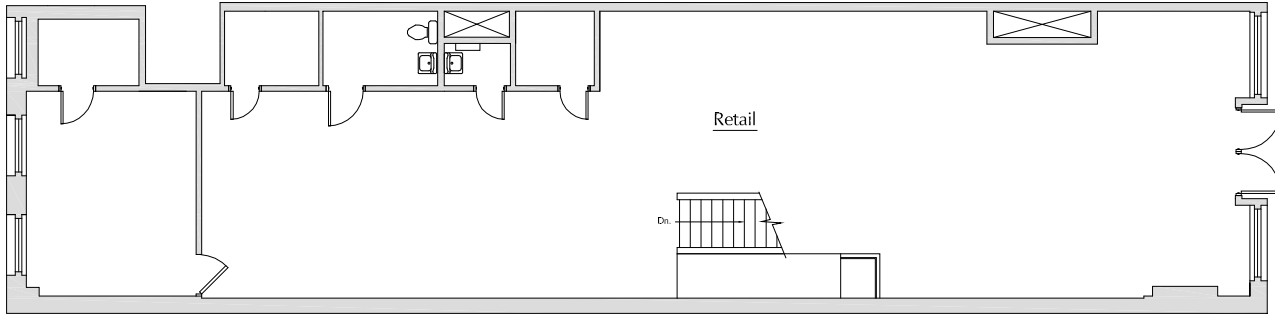
- Arias
- Fana Jewelry (soon)
- Cinq à Sept (soon)
- Mulberry
- Tiffany
- Chanel
- Ray-Ban
- Canada Goose
- Woolrich
- Marimekko

NOTES:

- Turnkey store on sought-after Soho block
- Full frontage with two display windows
- Blade signage

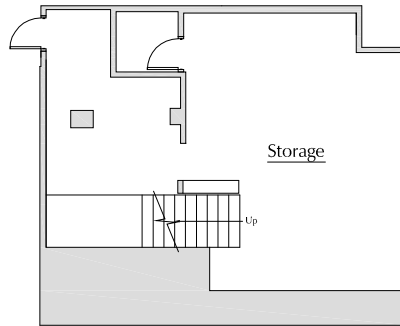


Ground Level



WOOSTER STREET

Lower Level



CONTACT:

Christopher Owles

212.604.9002

chris@sinvin.com

Sarah Shannon

646.673.8780

sarah@sinvin.com

SINVIN
COMMERCIAL REAL ESTATE & ADVISORY

<ul style="list-style-type: none"> • J&E & THE JACE • Reygha • RESTAURANT (NAME TBD) • HAPPY SOCKS • LAMY 	<ul style="list-style-type: none"> • (CELESTRA) • BOYS MEET • OUTERKNOWN • FABRY • IMWC JACOBS 	<ul style="list-style-type: none"> • Reddy • FARM RO • Rump & Lumber 	<ul style="list-style-type: none"> • JUNE 79 • Apple • FALCONERI • MONCLER • BUKOWA • THE MERCER HOTEL 	<ul style="list-style-type: none"> • PRADA
<ul style="list-style-type: none"> • VESIMO • LA BURDICK CHOCOLATE • LA COLOMBE • CHOBANI • Aesop • MORNING NEWS • CHARTIOR • TERRY ATLAN • MAID FRIZON • GURDAL BIBO FINE ART • STROCK FINE ART • AVITO • MAKEDA • SAMEDAY HEALTH • MAXXI GALLERY 	<ul style="list-style-type: none"> • TRANLIN BOWIES GALLERY • SCANDINI • SEE • UK GALLERY • CHASE CONTEMPORARY • NANAMICA • Barbour • WOOLRICH • TED BAKER • WAGS GOES WILD! • CANADA GOOSE • marimekko • MONICA VINAUER • GERRARD DAREL • PINKO 	<ul style="list-style-type: none"> • PLANS • PLANS • NAS • LA YISA • JOHN HARDY • SOMER • DAVID YURMAN • BARBER • tibi • VERSACE • DIOR HOMME • Dior • ARIAS • FANA • cing sept • TIFFANY & CO. • MULBERRY • ERIC EMANUEL • CHANEL • VALENTINO • BLUMBERG • COS • ETRO 	<ul style="list-style-type: none"> • LV • MIU MIU • INTERMIX • FAVELLI CARE • NESPRESSO • Stella McCartney • A.P.C. • JOURNELLE • MEERMIN • rag & bone • MCM • The Kooples • STURM • JIL SANDER • GIVENCHY • Y-3 • D&G • adidas • SAV DEWMAN • SPREDDO • SOLSTICE 	<ul style="list-style-type: none"> • CUTLER AND GROSS
<ul style="list-style-type: none"> • Street • OFD 	<ul style="list-style-type: none"> • IMPERIAL ENERGIES • NEURUS • JAY KOS • CONCRETE • Stella McCartney • Reygha • FERRARY 	<ul style="list-style-type: none"> • MACKAGE • EMERSONIAN • LONGCHAMP • AME • MOLTON BROWN • KENDRA SCOTT 	<ul style="list-style-type: none"> • DIESEL • BIRKENSTOCK • STUART WEITZMAN • maje • VUOTI • alo yoga 	<ul style="list-style-type: none"> • DOUGLAS JACO ALBERG