



## 211 WEST BROADWAY

Northeast Corner Of Franklin Street

### STUNNING TRIBECA CORNER AVAILABLE FOR LEASE RETAIL OR RESTAURANT SPACE WITH WRAPAROUND PATIO

- Prominent opportunity in the heart of Tribeca
- Turnkey restaurant installation
- All uses considered. Ideal for gallery, furniture, fashion





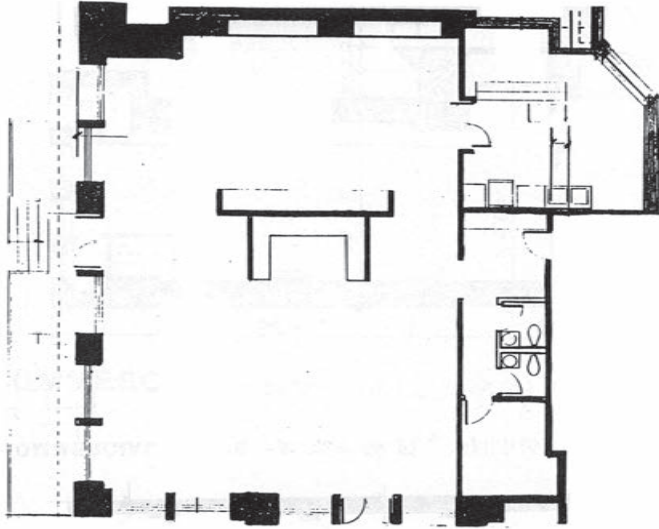
Ground Level .....**2,847 Square Feet**  
 Lower Level.....**3,047 Square Feet**  
 Outdoor Patio.....**500 Square Feet**

Ceiling Height.....**15' (Approx.)**  
 Possession.....**Immediate**  
 Asking Rent.....**Please Inquire**

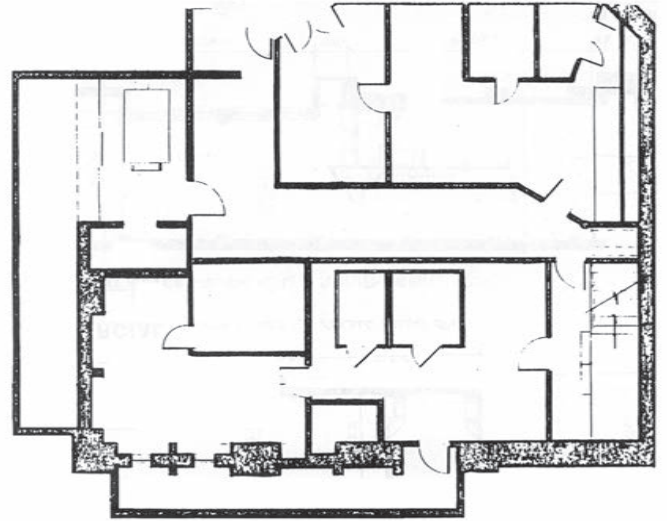
- Venting and gas are in place
- Current tenant has full liquor license
- 132 person capacity
- Roadway enclosure for additional outdoor dining
- Contiguous basement includes prep kitchen, walk-in refrigeration, and dry storage
- 90' of wraparound frontage faces south and west for long hours of sun!
- Opposite the Franklin Street Subway Station



Ground Level



Lower Level



NEIGHBORS INCLUDE:

- Maman
- Paper Source
- Batard
- Frenchette
- Todd Snyder
- Ace Hardware
- Terra
- Rigor Hill
- One White Street
- Ortuzar Projects
- Casa Carmen
- Ted Meuhling
- NY Academy of Art

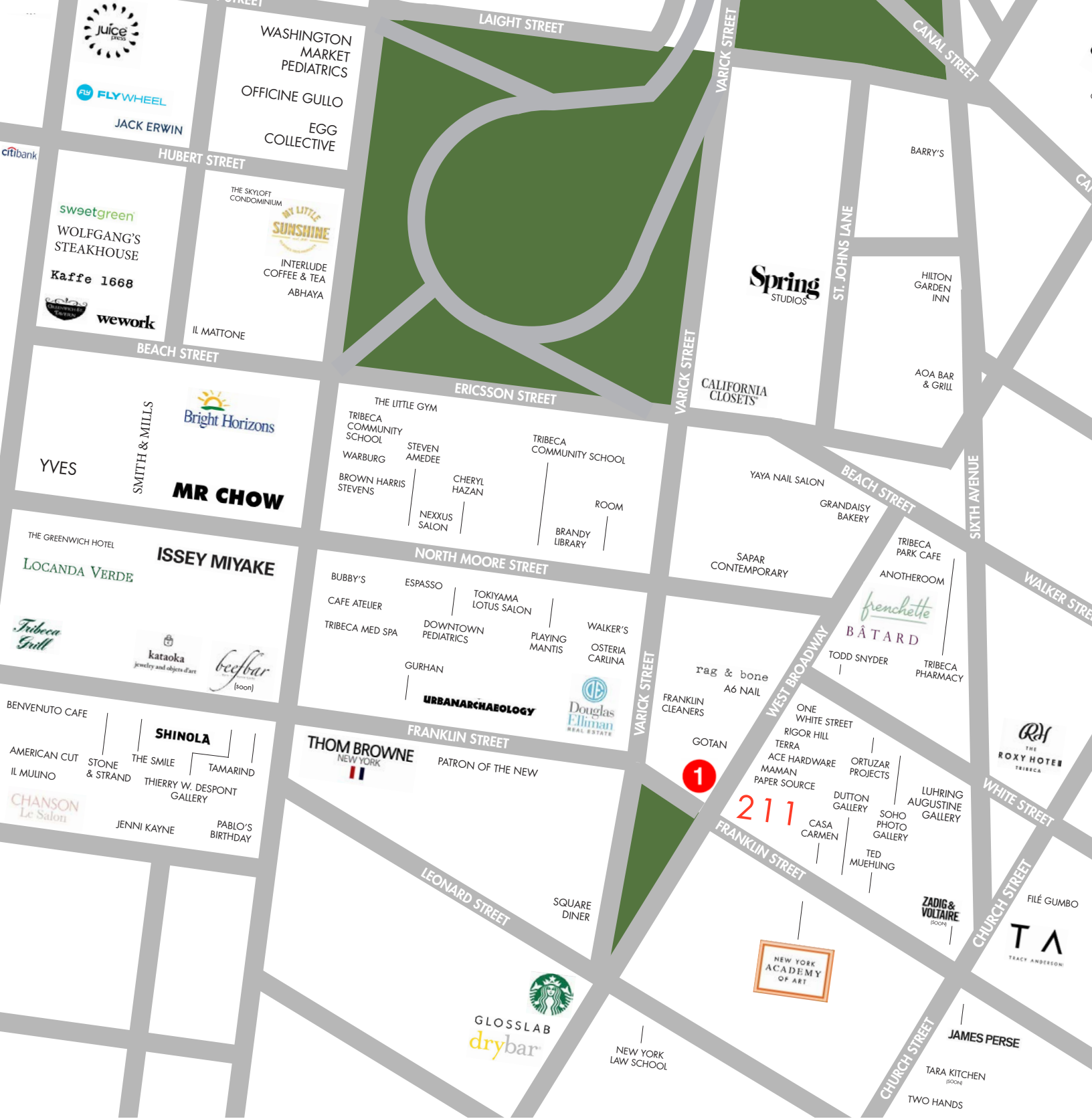
PLEASE CONTACT:

**Christopher Owles**  
212.604.9002 | [chris@sinvin.com](mailto:chris@sinvin.com)

**Margie Sarway**  
646.673.8742 | [margie@sinvin.com](mailto:margie@sinvin.com)

**Owen Toland**  
212.604.9825 | [owen@sinvin.com](mailto:owen@sinvin.com)





# 211 WEST BROADWAY

Northeast Corner Of Franklin Street

