

Steps from Union Square

25

WEST 14TH STREET
Between Fifth & Sixth Avenues



Notes:

- Dedicated ground floor entrance, including a private elevator and staircase leading to 2nd floor
- Potential to combine with the ground floor for an additional 3,111 Square Feet
- Currently built out as a fitness center with several private studios and offices
- All uses considered, can be vented for restaurant or entertainment
- Exclusive rooftop with outdoor deck
- Prominent signage opportunities
- 175' of frontage on West 14th Street
- 13' ceilings on the 2nd Floor

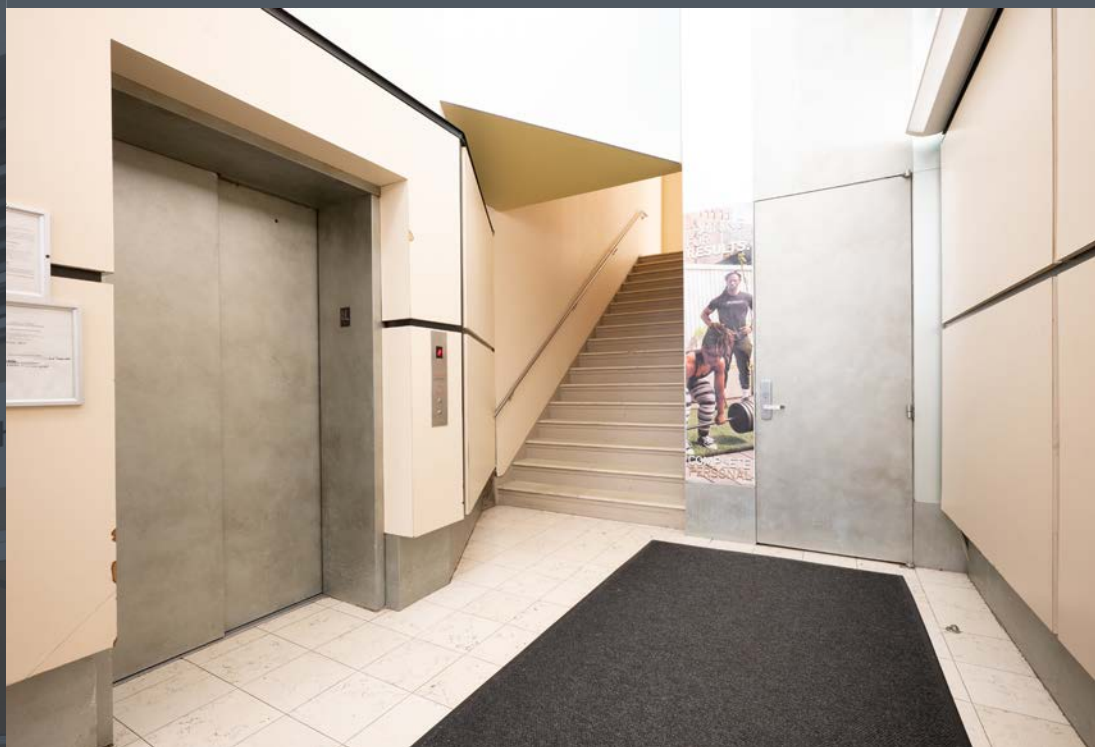


Neighbors:

- Levi's
- Guitar Center
- Piano
- CAMP
- Bandier
- Kindbody
- Modern Age
- The Well
- City MD
- BluePearl
- Republic Bank
- The New School

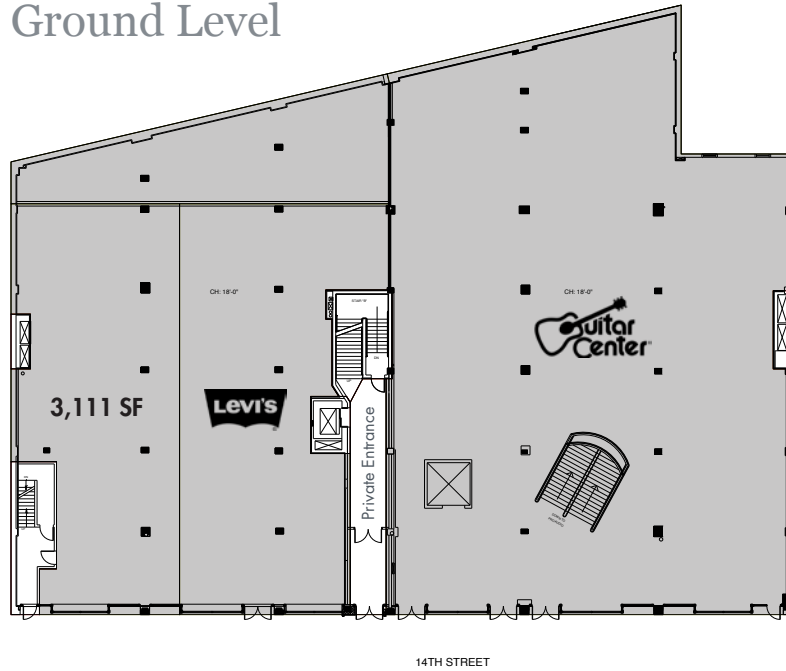
Ground: 600 Square Feet | 2nd Floor: 24,000 Square Feet

Possession: Arranged | Asking Rent: Please Inquire





Ground Level



2nd Floor



Please Contact:

Christopher Owles
212.604.9002
chris@sinvin.com

Teddy Srour
646.201.5143
teddy@sinvin.com

Eric Friedlander
646.201.5145
eric@sinvin.com

SINVIN
COMMERCIAL REAL ESTATE & ADVISORY